



## NON-COMPOSITE LIMITING WALL HEIGHTS

STUD DESIGNATION	SPACING o/c (in.)	5 PSF			7.5 PSF			10 PSF		
		L/120	L/240	L/360	L/120	L/240	L/360	L/120	L/240	L/360
<b>362RS125-18</b> (50 ksi)	DESIGN THICKNESS (0.0195)									
	16"	19'8"	17'2"	15'8"	15'8"	13'8"	12'5"	12'9"	11'2"	10'2"
	24"	17'2"	15'0"	13'8"	13'8"	11'11"	10'10"	11'11"	10'5"	9'5"
<b>362RS162-18</b> (50 ksi)	DESIGN THICKNESS (0.0195)									
	16"	20'9"	18'1"	16'6"	16'6"	14'5"	13'1"	13'8"	12'7"	11'5"
	24"	18'1"	15'10"	14'5"	14'5"	13'1"	11'5"	12'7"	11'0"	10'1"
<b>362RS125-19</b> (50 ksi)	DESIGN THICKNESS (0.0195)									
	16"	19'10"	17'3"	15'9"	15'9"	13'10"	12'7"	12'11"	11'5"	10'6"
	24"	17'4"	15'3"	13'11"	13'10"	12'1"	11'0"	12'1"	10'8"	9'7"
<b>362RS162-19</b> (50 ksi)	DESIGN THICKNESS (0.0202)									
	16"	20'11"	18'5"	16'9"	17'1"	14'9"	13'5"	13'11"	12'11"	11'9"
	24"	18'5"	16'1"	14'11"	14'10"	13'5"	11'8"	12'10"	11'4"	10'5"
<b>362RS125-30</b> (50 ksi)	DESIGN THICKNESS (0.0312)									
	16"	23'1"	20'1"	18'4"	18'2"	15'11"	14'5"	16'0"	13'11"	12'8"
	24"	20'1"	17'9"	16'1"	15'11"	13'11"	12'10"	13'10"	12'1"	11'8"
<b>362RS162-30</b> (50 ksi)	DESIGN THICKNESS (0.0312)									
	16"	23'7"	20'7"	18'9"	18'9"	16'4"	14'10"	16'4"	14'3"	13'0"
	24"	20'7"	18'0"	16'4"	16'4"	14'3"	13'0"	14'3"	12'5"	11'11"
<b>362RS162-33</b> (50 ksi)	DESIGN THICKNESS (0.0346)									
	16"	25'10"	21'0"	19'1"	19'1"	16'8"	15'2"	16'8"	14'7"	13'3"
	24"	21'5"	18'8"	17'1"	17'0"	15'1"	13'3"	14'7"	12'9"	12'1"



## NON-COMPOSITE LIMITING WALL HEIGHTS

STUD DESIGNATION	SPACING o/c (in.)	5 PSF			7.5 PSF			10 PSF		
		L/120	L/240	L/360	L/120	L/240	L/360	L/120	L/240	L/360
DESIGN THICKNESS (0.0451)										
<b>362RS162-43</b> (50 ksi)	16"	27'5"	22'9"	20'3"	20'4"	17'9"	16'1"	17'10"	15'6"	14'5"
	24"	23'2"	20'2"	18'5"	18'4"	16'3"	14'11"	16'1"	14'5"	13'2"
DESIGN THICKNESS (0.0195)										
<b>400RS137-18</b> (50 ksi)	16"	20'8"	18'0"	16'5"	16'5"	14'4"	13'0"	14'4"	12'6"	11'4"
	24"	18'0"	15'9"	14'4"	14'4"	12'6"	11'4"	12'6"	10'11"	9'11"
DESIGN THICKNESS (0.0203)										
<b>400RS162-19</b> (50 ksi)	16"	21'10"	20'2"	18'3"	18'4"	17'3"	15'8"	17'3"	15'1"	13'8"
	24"	20'9"	19'0"	17'3"	17'3"	15'1"	13'8"	15'2"	13'2"	12'0"
DESIGN THICKNESS (0.021)										
<b>400RS162-20</b> (50 ksi)	16"	22'4"	20'6"	18'6"	18'7"	17'6"	15'11"	17'5"	15'3"	13'10"
	24"	21'3"	19'4"	17'6"	17'5"	15'4"	13'11"	15'4"	13'4"	12'2"
DESIGN THICKNESS (0.0312)										
<b>400RS137-30</b> (50 ksi)	16"	25'1"	21'6"	19'4"	19'5"	18'6"	16'8"	17'8"	15'6"	14'5"
	24"	21'9"	19'5"	17'8"	17'7"	15'6"	14'0"	15'3"	13'11"	12'4"
DESIGN THICKNESS (0.0312)										
<b>400RS162-30</b> (50 ksi)	16"	25'3"	22'1"	19'11"	20'1"	18'9"	15'11"	17'5"	15'8"	14'9"
	24"	22'6"	19'7"	17'10"	17'9"	15'7"	14'2"	15'7"	13'8"	12'5"
DESIGN THICKNESS (0.0346)										
<b>400RS137-34</b> (50 ksi)	16"	26'7"	21'8"	21'7"	20'8"	19'2"	17'7"	18'6"	16'8"	15'8"
	24"	23'3"	19'9"	18'6"	18'6"	16'0"	14'8"	16'1"	13'10"	12'11"



## NON-COMPOSITE LIMITING WALL HEIGHTS

STUD DESIGNATION	SPACING o/c (in.)	5 PSF			7.5 PSF			10 PSF		
		L/120	L/240	L/360	L/120	L/240	L/360	L/120	L/240	L/360
DESIGN THICKNESS (0.0346)										
400RS162-34 (50 ksi)	16"	27'6"	22'5"	20'5"	21'10"	19'10"	18'2"	19'1"	15'7"	14'2"
	24"	24'0"	20'7"	19'10"	19'9"	16'5"	15'2"	17'6"	14'7"	13'4"
DESIGN THICKNESS (0.0451)										
400RS162-43 (50 ksi)	16"	29'11"	24'7"	22'4"	22'4"	20'2"	18'3"	20'9"	17'1"	15'6"
	24"	26'1"	21'6"	20'6"	20'9"	17'1"	15'6"	18'7"	14'11"	13'6"
DESIGN THICKNESS (0.0451)										
400RS200-43 (50 ksi)	16"	31'0"	25'7"	23'3"	24'7"	20'4"	18'6"	21'6"	17'9"	16'2"
	24"	27'2"	22'5"	20'4"	21'6"	17'9"	16'2"	18'10"	15'6"	14'1"
DESIGN THICKNESS (0.0195)										
600RS162-18 (50 ksi)	16"	28'0"	25'11"	23'7"	22'3"	20'7"	18'8"	19'5"	18'0"	16'4"
	24"	24'5"	22'8"	20'7"	19'5"	18'0"	16'4"	17'1"	15'8"	14'3"
DESIGN THICKNESS (0.0312)										
600RS162-30 (50 ksi)	16"	36'11"	32'3"	29'4"	29'4"	25'7"	23'3"	25'7"	22'4"	20'4"
	24"	32'3"	28'2"	25'7"	25'7"	23'0"	20'4"	22'4"	19'6"	17'5"
DESIGN THICKNESS (0.0346)										
600RS162-33 (50 ksi)	16"	37'11"	33'2"	30'2"	30'2"	26'4"	23'11"	26'4"	23'0"	20'11"
	24"	33'2"	29'0"	26'4"	26'4"	23'7"	20'11"	23'0"	20'1"	18'3"
DESIGN THICKNESS (0.0451)										
600RS162-43 (50 ksi)	16"	39'8"	35'5"	32'2"	31'9"	28'1"	25'2"	27'9"	24'2"	22'0"
	24"	34'8"	30'6"	27'9"	27'4"	24'2"	22'4"	24'2"	21'5"	18'5"



## NON-COMPOSITE LIMITING WALL HEIGHTS

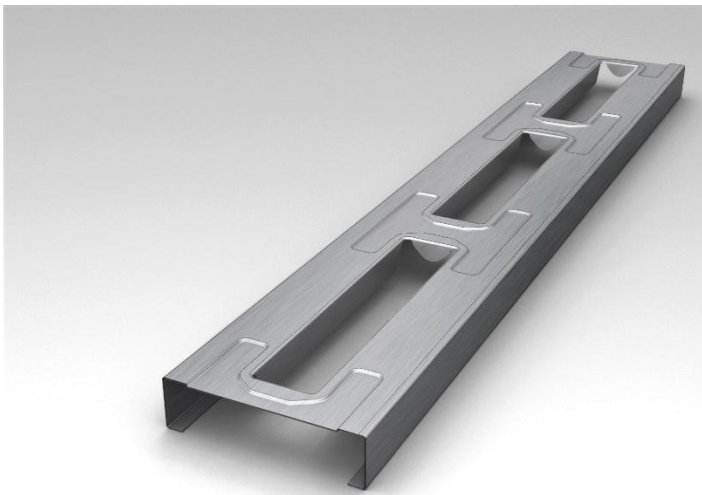
STUD DESIGNATION	SPACING o/c (in.)	5 PSF			7.5 PSF			10 PSF		
		L/120	L/240	L/360	L/120	L/240	L/360	L/120	L/240	L/360
<b>600RS162-54</b> (55 ksi)	DESIGN THICKNESS (0.0566)									
	16"	40'11"	36'5"	33'2"	33'6"	29'3"	26'6"	28'6"	25'2"	22'8"
	24"	36'3"	32'9"	29'1"	29'7"	25'7"	22'4"	26'5"	22'6"	19'6"
<b>600RS175-57</b> (55 ksi)	DESIGN THICKNESS (0.0601)									
	16"	41'3"	37'3"	34'3"	34'4"	29'5"	26'8"	29'3"	25'8"	23'1"
	24"	36'10"	33'8"	30'3"	30'3"	26'8"	23'5"	26'10"	22'11"	20'3"
<b>600RS200-54</b> (55 ksi)	DESIGN THICKNESS (0.0566)									
	16"	41'7"	37'6"	34'4"	34'3"	29'11"	26'11"	29'6"	25'11"	23'5"
	24"	37'1"	34'3"	30'10"	30'8"	27'3"	24'10"	27'1"	23'4"	21'1"
<b>600RS162-60</b> (55 ksi)	DESIGN THICKNESS (0.0632)									
	16"	41'9"	37'8"	34'10"	34'8"	30'5"	27'1"	29'10"	26'1"	23'7"
	24"	37'3"	34'7"	31'3"	31'2"	27'9"	25'2"	27'3"	23'6"	21'5"
<b>600RS200-60</b> (55 ksi)	DESIGN THICKNESS (0.0632)									
	16"	43'1"	38'7"	35'3"	35'2"	31'0"	27'8"	30'11"	27'9"	24'9"
	24"	38'7"	35'10"	31'11"	31'10"	28'10"	26'2"	28'1"	24'10"	22'9"
<b>400RS137-19</b> (50 ksi)	DESIGN THICKNESS (0.0203)									
	16"	20'10"	18'2"	16'7"	15'6"	13'2"	14'6"	13'8"	12'8"	11'6"
	24"	18'2"	15'11"	14'6"	14'5"	12'8"	11'6"	12'8"	11'1"	13'2"



## NON-COMPOSITE LIMITING WALL HEIGHTS

### Legend

	Structural
	Drywall



### Notes:

– Reference Test: RSTD042919-39 Final Report (R-Stud) ICC-NTA AISA S902, AISI S909<sup>2</sup>/ICC-ES AC46 Sec. 4.3, ASTM A370.

Contact R-stud Technical Services at (503) 462-3990 for questions about R-stud wall assemblies.