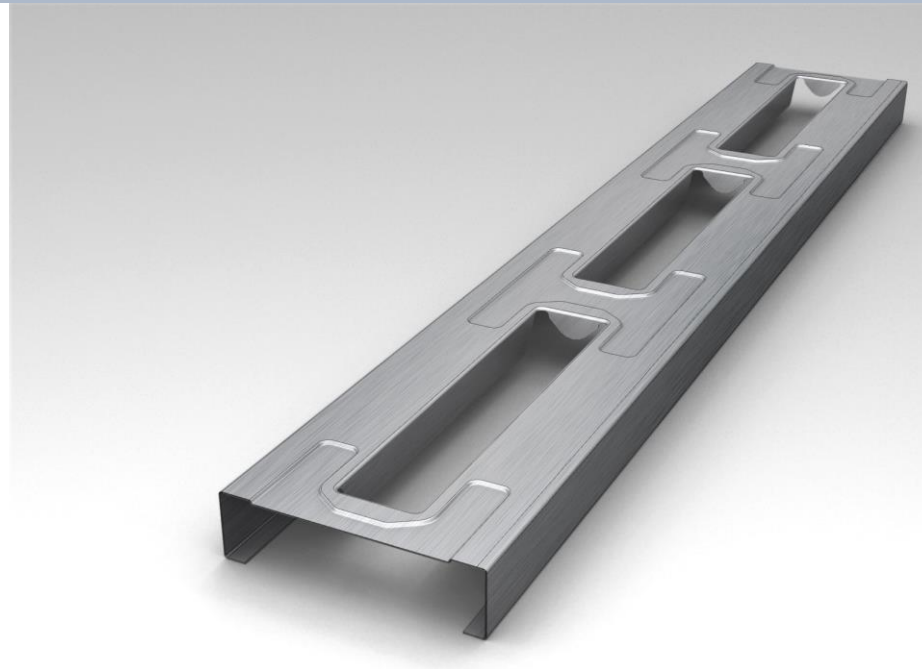


COMBINED AXIAL AND FLEXURAL LOAD CHARTS





COMBINED AXIAL AND FLEXURAL LOAD CHARTS

5 PSF LATERAL LOAD

Wall Height Ft	Spacing in OC	600RS162					600RS200					600RS225				
		50 Ksi					50 Ksi					50 Ksi				
		30 Mil	33 Mil	43 Mil	54 Mil	60 Mil	30 Mil	33 Mil	43 Mil	54 Mil	60 Mil	30 Mil	33 Mil	43 Mil	54 Mil	60 Mil
8	12	2.92	3.67	6.06	7.98	8.23	3.15	4.41	7.56	10.07	10.12	3.34	4.51	7.66	10.17	10.22
	16	2.87	3.62	6.02	7.91	8.16	3.09	4.36	7.51	10.02	10.07	3.28	4.46	7.61	10.12	10.17
	24	2.78	3.53	5.91	7.83	8.08	2.99	4.26	7.41	9.93	9.98	3.13	4.36	7.51	10.03	10.08
9	12	2.88	3.60	5.99	7.91	8.16	3.08	4.33	7.41	9.89	9.94	3.29	4.43	7.51	9.99	10.04
	16	2.82	3.53	5.87	7.86	8.11	3.01	4.26	7.36	9.83	9.88	3.21	4.36	7.46	9.93	9.98
	24	2.7	3.42	5.79	7.76	8.01	2.88	4.13	7.22	9.71	9.76	3.02	4.23	7.32	9.81	9.86
10	12	2.83	3.59	5.97	7.87	8.12	3.00	4.23	7.24	9.68	9.73	3.24	4.33	7.34	9.78	9.83
	16	2.75	3.51	5.78	7.80	8.05	2.92	4.16	7.16	9.60	9.65	3.11	4.26	7.26	9.70	9.75
	24	2.6	3.37	5.49	7.67	7.92	2.75	3.98	6.99	9.44	9.49	2.88	4.08	7.09	9.54	9.59
12	12	2.67	3.36	5.86	7.75	8.00	2.81	3.98	6.77	9.10	9.15	3.00	4.08	6.87	9.20	9.25
	16	2.58	3.29	5.75	7.66	7.91	2.68	3.86	6.66	8.99	9.04	2.85	3.96	6.86	9.09	9.14
	24	2.35	3.06	5.34	7.45	7.70	2.44	3.62	6.41	8.76	8.81	2.53	3.72	6.51	8.86	8.91
14	12	2.45	3.11	5.43	7.27	7.52	2.55	3.76	6.17	8.35	8.40	2.69	3.86	6.27	8.45	8.50
	16	2.31	2.95	5.29	7.13	7.38	2.39	3.50	6.01	8.20	8.25	2.48	3.60	6.11	8.30	8.35
	24	1.95	2.68	5.03	6.83	7.10	2.08	3.19	5.69	7.89	7.94	2.08	3.29	5.79	7.99	8.05
16	12	2.18	2.81	4.79	6.53	6.85	2.26	3.28	5.48	7.48	7.53	2.34	3.38	5.58	7.58	7.63
	16	1.96	2.62	4.54	6.35	6.66	2.06	3.05	5.28	7.27	7.32	2.09	3.15	5.38	7.37	7.42
	24	1.58	2.27	4.29	5.98	6.32	1.67	2.71	4.89	6.89	6.94	1.77	2.81	4.99	6.99	7.04



COMBINED AXIAL AND FLEXURAL LOAD CHARTS

15 PSF LATERAL LOAD

Wall Height Ft	Spacing in OC	600RS162					600RS200					600RS225				
		50 Ksi					50 Ksi					50 Ksi				
		30 Mil	33 Mil	43 Mil	54 Mil	60 Mil	30 Mil	33 Mil	43 Mil	54 Mil	60 Mil	30 Mil	33 Mil	43 Mil	54 Mil	60 Mil
8	12	2.14	3.64	5.87	7.72	7.97	2.77	4.11	7.26	9.79	9.84	3.06	4.21	7.36	9.89	9.94
	16	2.00	3.52	5.75	7.60	7.85	2.63	3.96	7.11	9.65	9.70	3.01	4.06	7.21	9.75	9.80
	24	1.73	3.27	5.52	7.38	7.63	2.35	3.76	6.81	9.37	9.42	2.92	3.86	6.91	9.47	9.52
9	12	2.02	3.53	5.76	7.61	7.86	2.63	3.94	7.02	9.53	9.58	3.00	4.04	7.12	9.63	9.68
	16	1.86	3.37	5.61	7.46	7.70	2.46	3.75	6.83	9.35	9.40	2.94	3.85	6.93	9.45	9.50
	24	1.51	3.16	5.31	7.17	7.42	2.10	3.37	6.46	8.99	9.04	2.82	3.47	6.56	9.09	9.14
10	12	1.89	3.41	5.64	7.45	7.73	2.48	3.76	6.76	9.22	9.27	2.93	3.86	6.86	9.32	9.37
	16	1.67	3.21	5.44	7.30	7.55	2.28	3.51	6.51	8.99	8.74	2.85	3.61	6.61	9.09	8.84
	24	1.26	2.82	5.17	6.93	7.18	1.83	3.06	6.04	8.38	8.60	2.80	3.16	6.14	8.68	8.70
12	12	1.54	3.16	5.26	7.15	7.41	2.11	3.29	6.06	8.43	8.48	2.75	3.39	6.16	8.53	8.58
	16	1.25	2.78	4.98	6.87	7.12	2.00	2.96	5.73	8.00	8.15	2.64	3.06	5.83	8.20	8.25
	24	0.70	2.26	4.44	6.33	6.57	1.23	2.34	5.08	7.37	7.52	2.42	2.44	5.18	7.57	7.62
14	12	1.15	2.63	4.65	6.40	6.70	1.69	2.76	6.24	7.44	7.49	2.52	2.86	6.34	7.54	7.59
	16	0.79	2.28	4.29	6.13	6.33	1.31	2.34	4.81	7.02	7.07	2.37	2.44	4.91	7.12	7.17
	24	0.14	1.58	3.61	5.32	5.62	0.62	1.62	4.02	6.23	6.18	2.09	1.68	4.12	6.33	6.38
16	12	0.76	2.17	3.96	5.53	5.83	1.26	2.19	4.36	6.35	6.40	2.26	2.29	4.46	6.45	6.50
	16	0.36	1.72	3.53	5.09	5.39	0.82	1.76	3.86	5.85	5.90	2.07	1.82	3.96	5.95	6.00
	24	-	0.87	2.78	4.27	4.57	-	0.97	2.98	4.95	5.00	1.82	1.11	3.08	5.05	5.10



COMBINED AXIAL AND FLEXURAL LOAD CHARTS

20 PSF LATERAL LOAD

Wall Height Ft	Spacing in OC	600RS162					600RS200					600RS225				
		50 Ksi					50 Ksi					50 Ksi				
		30 Mil	33 Mil	43 Mil	54 Mil	60 Mil	30 Mil	33 Mil	43 Mil	54 Mil	60 Mil	30 Mil	33 Mil	43 Mil	54 Mil	60 Mil
8	12	2.00	3.52	5.87	7.72	7.97	2.52	3.96	7.11	9.66	9.70	2.77	4.06	7.21	9.96	9.80
	16	1.82	3.36	5.75	7.60	7.85	2.35	3.76	6.91	9.46	9.51	2.63	3.86	7.01	9.56	9.61
	24	1.47	3.13	5.52	7.38	7.63	1.98	3.37	6.52	9.10	9.15	2.35	3.47	6.62	9.20	9.25
9	12	1.85	3.27	5.76	7.61	7.86	2.36	3.75	6.83	9.35	9.40	2.63	3.85	6.93	9.45	9.50
	16	1.62	3.06	5.61	7.46	7.70	2.12	3.50	6.58	9.11	9.16	2.46	3.60	6.68	9.21	9.26
	24	1.18	2.65	5.31	7.17	7.42	1.66	3.02	6.06	8.64	8.69	2.10	3.12	6.16	8.74	8.79
10	12	1.67	3.01	5.64	7.45	7.73	2.16	3.51	6.51	8.99	9.04	2.48	3.61	6.61	9.09	8.94
	16	1.40	2.76	5.44	7.30	7.55	1.87	3.21	6.20	8.79	8.74	2.28	3.31	6.30	8.89	8.84
	24	0.85	2.24	5.17	6.93	7.18	1.32	2.71	5.59	8.12	8.17	1.83	2.81	5.69	8.22	8.27
12	12	1.25	2.48	5.26	7.15	7.41	1.70	2.96	5.73	8.10	8.15	2.11	3.06	5.83	8.20	8.25
	16	0.88	2.12	4.98	6.87	7.12	1.32	2.54	5.29	7.98	7.83	2.00	2.64	5.39	8.08	7.93
	24	0.19	1.44	4.44	6.33	6.57	0.92	1.76	4.47	6.87	6.92	1.23	1.86	4.57	6.97	7.02
14	12	0.79	1.98	4.65	6.45	6.70	1.21	2.34	4.81	7.02	7.07	1.69	2.44	4.91	7.12	7.17
	16	0.16	1.53	3.83	6.18	6.33	0.36	1.83	4.28	6.49	6.53	1.31	1.93	4.38	6.59	8.83
	24	-	0.82	3.10	5.37	4.96	-	0.89	3.29	6.35	5.54	0.62	0.99	3.39	6.45	5.64
16	12	-	1.46	3.53	6.58	5.39	-	1.72	3.86	6.85	5.90	1.26	1.82	3.96	6.95	6.00
	16	-	0.96	3.12	4.58	4.83	-	1.14	3.26	6.24	5.29	0.82	1.24	3.36	6.34	5.39
	24	-	-	2.10	3.69	3.84	-	0.11	2.19	4.13	4.18	-	0.21	2.29	4.23	4.28



COMBINED AXIAL AND FLEXURAL LOAD CHARTS

25 PSF LATERAL LOAD

Wall Height Ft	Spacing in OC	600RS162					600RS200					600RS225				
		50 Ksi					50 Ksi					50 Ksi				
		33 Mil	43 Mil	54 Mil	60 Mil	68 Mil	33 Mil	43 Mil	54 Mil	60 Mil	68 Mil	33 Mil	43 Mil	54 Mil	60 Mil	68 Mil
8	12	2.17	3.39	5.64	7.49	7.74	2.39	3.81	7.11	9.51	9.56	2.49	3.91	7.21	9.61	9.66
	16	1.94	3.19	5.44	7.30	7.55	2.16	3.56	6.91	9.28	9.33	2.26	3.66	7.01	9.38	9.43
	24	1.51	2.78	5.06	6.93	7.18	1.90	3.08	6.52	8.82	8.87	2.00	3.18	6.62	8.92	8.97
9	12	1.98	3.16	5.48	7.32	7.56	2.18	3.56	6.83	9.17	9.22	2.28	3.66	6.93	9.27	9.32
	16	1.70	2.10	5.21	7.07	7.32	1.89	3.25	6.58	8.88	8.93	1.99	3.35	6.68	8.98	9.03
	24	1.16	2.41	4.72	6.59	6.84	1.33	2.75	6.06	8.29	8.34	1.43	2.85	6.16	8.39	8.44
10	12	1.76	3.01	5.26	7.11	7.36	1.94	3.28	6.51	8.77	8.82	2.04	3.38	6.61	8.87	8.92
	16	1.43	2.29	4.94	6.80	7.05	1.59	2.91	6.20	8.40	8.45	1.69	3.01	6.30	8.50	8.55
	24	0.78	2.08	4.34	6.21	6.46	0.92	2.18	5.59	7.69	7.84	1.02	2.28	5.69	7.79	7.94
12	12	1.27	2.41	4.70	6.59	6.84	1.41	2.76	5.73	7.78	7.83	1.51	2.86	5.83	7.88	7.93
	16	0.93	2.08	4.27	6.14	6.39	0.96	2.14	5.29	7.27	7.32	1.06	2.24	5.39	7.37	7.42
	24	-	1.16	3.44	5.29	5.54	-	1.20	4.47	6.30	6.35	-	1.30	4.57	6.40	6.45
14	12	-	1.84	3.94	5.71	5.96	0.86	1.96	4.81	6.61	6.66	0.96	2.06	4.91	6.71	6.76
	16	-	1.31	3.40	5.15	5.40	0.31	1.35	4.28	5.47	6.52	0.41	1.45	4.38	5.57	6.62
	24	-	-	2.42	4.10	4.35	-	0.28	3.29	4.80	4.85	-	0.38	3.39	4.90	4.95
16	12	-	-	2.54	4.72	4.97	0.33	1.28	3.86	5.39	5.44	0.43	1.38	3.96	5.49	5.54
	16	-	-	1.48	4.17	4.42	-	0.90	3.26	4.97	5.02	-	1.00	3.36	5.07	5.12
	24	-	-	-	2.93	3.17	-	-	2.19	3.35	3.43	-	-	2.29	3.45	3.53



COMBINED AXIAL AND FLEXURAL LOAD CHARTS

30 PSF LATERAL LOAD

Wall Height Ft	Spacing in OC	600RS162					600RS200					600RS225				
		50 Ksi					50 Ksi					50 Ksi				
		30 Mil	33 Mil	43 Mil	54 Mil	60 Mil	30 Mil	33 Mil	43 Mil	54 Mil	60 Mil	30 Mil	33 Mil	43 Mil	54 Mil	60 Mil
8	12	2.20	2.98	5.52	7.38	7.63	2.25	3.27	6.81	9.37	9.42	2.56	3.76	6.91	9.47	9.52
	16	1.87	2.88	5.29	7.05	7.30	1.98	3.13	6.52	9.10	9.15	2.26	3.47	6.62	9.20	9.25
	24	1.20	1.89	4.83	6.65	6.96	1.44	2.55	5.94	8.56	8.61	1.63	2.89	6.04	8.66	8.71
9	12	1.90	2.67	5.31	7.17	7.42	2.00	3.06	6.46	8.99	9.04	2.25	3.47	6.56	9.09	9.14
	16	1.50	1.77	5.02	6.84	7.13	1.76	2.75	6.08	8.64	8.69	1.92	3.11	6.18	8.74	8.79
	24	0.79	1.28	4.44	6.14	6.56	1.00	2.16	5.36	7.45	7.50	1.20	2.40	5.46	7.55	7.60
10	12	1.60	1.75	5.07	6.93	7.18	1.73	2.82	6.04	8.56	8.61	1.99	3.16	6.14	8.66	8.71
	16	1.14	1.46	4.70	6.52	6.81	1.32	2.44	5.59	8.12	8.17	1.55	2.81	5.69	8.22	8.27
	24	0.28	1.22	4.00	5.86	6.11	0.54	1.72	4.72	7.28	7.33	0.68	1.87	4.82	7.38	7.43
12	12	0.88	0.92	4.44	6.32	6.57	1.13	2.26	5.08	7.47	7.52	1.23	2.44	5.18	7.57	7.62
	16	0.46	0.62	3.93	5.80	6.05	0.70	1.74	4.47	6.87	6.92	0.88	1.86	4.57	6.97	7.02
	24	-	-	2.97	4.63	4.33	-	0.81	3.34	5.75	5.80	-	1.07	3.44	5.85	5.90
14	12	-	0.42	3.61	5.25	5.62	0.52	1.62	4.02	6.23	6.28	-	1.68	4.12	6.33	6.38
	16	-	-	3.00	4.54	4.94	-	1.02	3.29	5.49	5.54	-	0.99	3.39	5.59	5.64
	24	-	-	1.88	3.40	3.50	-	-	1.98	4.16	4.21	-	-	2.08	4.26	4.31
16	12	-	-	2.78	4.03	4.47	-	1.01	2.98	4.96	5.01	-	0.97	3.08	5.06	5.11
	16	-	-	2.10	3.43	3.84	-	-	2.19	4.13	4.18	-	0.21	2.29	4.23	4.28
	24	-	-	0.80	2.17	2.55	-	-	0.90	2.79	2.84	-	-	0.99	2.89	2.94



COMBINED AXIAL AND FLEXURAL LOAD CHARTS

35 PSF LATERAL LOAD

Wall Height Ft	Spacing in OC	600RS162					600RS200					600RS225				
		50 Ksi					50 Ksi					50 Ksi				
		30 Mil	33 Mil	43 Mil	54 Mil	60 Mil	30 Mil	33 Mil	43 Mil	54 Mil	60 Mil	30 Mil	33 Mil	43 Mil	54 Mil	60 Mil
8	12	2.00	3.16	5.40	7.26	7.51	2.11	3.51	6.76	9.23	9.28	2.21	3.61	6.86	9.33	9.38
	16	1.70	2.86	5.14	7.00	7.25	1.80	3.17	6.32	8.91	8.96	1.90	3.27	6.42	9.01	9.06
	24	0.80	2.31	4.61	6.49	6.74	0.85	2.51	5.96	8.20	8.33	0.90	2.61	6.06	8.30	8.43
9	12	1.74	2.85	5.16	7.32	7.27	1.83	3.19	6.27	8.82	8.87	1.93	3.29	6.37	8.92	8.97
	16	1.36	2.51	4.82	6.69	6.94	1.44	2.77	5.84	8.41	8.46	1.54	2.87	5.97	8.51	8.56
	24	0.64	1.81	4.16	6.13	6.28	0.78	1.95	5.00	7.92	7.77	0.78	2.05	5.10	8.02	7.87
10	12	1.46	2.53	4.88	6.74	6.99	1.52	2.83	5.81	8.33	8.38	1.62	2.93	5.91	8.43	8.48
	16	1.01	2.10	4.46	6.32	6.57	1.06	2.33	5.29	7.83	7.88	1.15	2.43	6.39	7.93	7.98
	24	-	1.28	3.66	5.52	5.76	0.17	1.36	4.30	6.87	6.92	0.65	1.46	4.40	6.97	7.02
12	12	0.84	1.89	4.18	6.36	6.30	0.86	2.04	4.77	7.17	7.22	0.96	2.14	4.87	7.27	7.32
	16	0.21	1.32	3.60	5.48	5.71	0.26	1.38	4.08	6.49	6.54	0.36	1.48	4.18	6.59	6.64
	24	-	-	2.53	4.34	4.59	-	0.16	2.80	6.22	6.27	-	0.26	2.90	6.32	6.37
14	12	0.16	1.16	3.30	5.34	5.29	0.20	1.23	3.96	6.85	6.91	0.30	1.33	4.06	6.95	7.01
	16	-	0.39	2.61	4.30	4.55	-	0.46	2.84	5.03	5.08	-	0.56	2.94	5.13	5.18
	24	-	-	1.37	2.98	3.23	-	-	1.38	3.54	3.59	-	-	1.48	3.64	3.69
16	12	-	0.42	2.43	3.96	4.20	-	0.48	2.58	4.53	4.58	-	0.58	2.68	4.63	4.68
	16	-	-	1.68	3.14	3.39	-	-	1.70	3.73	3.78	-	-	1.80	3.83	3.88
	24	-	-	-	1.72	1.97	-	-	0.18	2.04	2.09	-	-	0.28	2.14	2.19



COMBINED AXIAL AND FLEXURAL LOAD CHARTS

40 PSF LATERAL LOAD

Wall Height Ft	Spacing in OC	600RS162					600RS200					600RS225				
		50 Ksi					50 Ksi					50 Ksi				
		30 Mil	33 Mil	43 Mil	54 Mil	60 Mil	30 Mil	33 Mil	43 Mil	54 Mil	60 Mil	30 Mil	33 Mil	43 Mil	54 Mil	60 Mil
8.00	12	1.87	2.72	5.17	7.13	7.40	1.98	3.37	6.52	9.10	9.15	2.08	3.47	6.62	9.20	9.25
	16	1.20	2.36	4.80	6.84	7.10	1.72	2.98	6.13	8.73	8.78	1.82	3.08	6.23	8.83	8.88
	24	0.86	1.70	4.16	6.22	6.81	0.91	2.23	5.37	8.02	8.07	1.01	4.36	5.47	8.12	8.17
9.00	12	1.58	2.41	4.82	6.87	7.13	1.66	3.01	6.08	8.64	8.69	1.76	3.11	6.18	8.74	8.79
	16	1.16	1.98	4.41	6.42	6.75	1.22	2.53	5.59	8.18	8.23	1.32	2.63	5.69	8.28	8.33
	24	-	1.16	3.60	5.67	6.05	0.37	1.71	4.65	7.28	7.33	0.47	1.81	4.75	7.38	7.43
10.00	12	1.26	2.07	4.54	6.51	6.80	1.32	2.71	5.59	8.12	8.17	1.42	2.81	5.69	8.22	8.27
	16	0.76	1.56	4.04	6.01	6.34	0.84	2.04	5.00	7.55	7.60	1.09	2.14	5.10	7.65	7.70
	24	-	0.66	3.05	5.02	5.25	-	0.66	3.85	6.47	6.52	-	0.76	3.95	6.57	6.62
12.00	12	0.59	1.33	3.67	5.67	6.05	0.65	1.76	4.47	6.87	6.92	0.80	1.86	4.57	6.97	7.02
	16	-	0.83	3.01	4.96	5.38	-	1.02	3.70	6.11	6.16	-	1.12	3.80	6.21	6.26
	24	-	-	-	3.89	4.14	-	-	2.29	4.70	4.75	-	-	2.39	4.80	4.85
14.00	12	-	-	2.69	4.71	4.96	-	0.89	3.29	5.49	5.54	-	0.99	3.39	5.59	5.64
	16	-	-	2.01	3.91	4.16	-	-	2.40	4.58	4.63	-	-	2.50	4.68	4.73
	24	-	-	0.61	2.45	2.70	-	-	0.81	2.95	3.00	-	-	0.91	3.05	3.10
16.00	12	-	-	1.71	3.59	3.84	-	0.11	2.19	4.13	4.18	-	0.21	2.29	4.23	4.28
	16	-	-	0.83	2.71	2.96	-	-	1.24	3.15	3.20	-	-	1.34	3.25	3.30
	24	-	-	-	1.17	1.42	-	-	-	1.42	1.47	-	-	-	1.52	1.57



COMBINED AXIAL AND FLEXURAL LOAD CHARTS

50 PSF LATERAL LOAD

Wall Height	Spacing	600RS162					600RS200					600RS225				
		50 Ksi					50 Ksi					50 Ksi				
Ft	in OC	30 Mil	33 Mil	43 Mil	54 Mil	60 Mil	30 Mil	33 Mil	43 Mil	54 Mil	60 Mil	30 Mil	33 Mil	43 Mil	54 Mil	60 Mil
8	12	1.71	2.78	5.06	6.93	7.18	1.75	3.08	6.22	8.82	8.87	1.8	3.18	6.32	8.92	8.97
	16	1.28	2.39	4.68	6.56	6.81	1.31	2.7	5.74	8.37	8.42	1.36	2.8	5.84	8.47	8.52
	24	-	1.62	3.95	6.84	6.09	0.45	1.78	4.81	7.49	7.54	0.5	1.88	4.91	7.59	7.64
9	12	1.31	2.41	4.72	6.59	6.84	1.38	2.76	5.72	8.29	8.34	1.43	2.86	5.82	8.39	8.44
	16	0.79	1.91	4.26	6.12	6.37	0.84	2.07	5.12	7.73	7.78	0.89	2.17	5.22	7.83	7.88
	24	-	0.92	3.34	5.22	5.46	-	0.95	3.97	6.63	6.68	-	1.05	4.07	6.73	6.78
10	12	0.93	1.98	4.34	6.21	6.46	0.97	2.18	5.16	7.79	7.84	1.02	2.28	5.25	7.89	7.94
	16	-	1.29	3.77	5.63	5.88	0.34	1.49	4.43	7	7.05	0.39	1.59	4.53	7.1	7.15
	24	-	-	2.67	4.53	4.77	-	0.2	3.09	5.69	5.74	-	0.3	3.19	5.79	5.84
12	12	-	1.06	3.44	5.29	5.54	-	1.2	3.89	6.3	6.35	-	1.3	3.99	6.4	6.54
	16	-	0.31	2.67	4.5	4.75	-	0.33	2.96	5.39	5.44	-	0.43	3.06	5.49	5.54
	24	-	-	1.27	3.13	3.38	-	-	1.32	3.72	3.77	-	-	1.42	3.82	3.87
14	12	-	-	2.42	4.1	4.35	-	0.25	2.62	4.8	4.85	-	0.35	2.72	4.9	4.95
	16	-	-	1.53	3.16	3.41	-	-	1.58	3.74	3.79	-	-	1.68	3.84	3.89
	24	-	-	-	1.47	1.72	-	-	-	1.84	1.91	-	-	-	1.96	2.01
16	12	-	-	1.48	2.92	3.17	-	-	1.47	3.38	3.43	-	-	1.57	3.48	3.53
	16	-	-	0.54	1.91	2.16	-	-	0.38	2.21	2.31	-	-	-	2.36	2.41
	24	-	-	-	-	-	-	-	-	0.28	0.33	-	-	-	-	0.43



Rstud
3200 Park Center Dr. 14th Fl,
Costa Mesa, CA 92626
Tel: (877-289-0705)
Email: info@rstud.com
Web: www.rstud.biz

**Engineering Technology Consultants Corporation
POB 244, Marysville, WA 98270
425-210-5353**

To Whom it may concern:

The attached Combined Loads Tables are based on testing data provided by ICC NTA, LLC, 305 N Oakland Ave., Nappanee, IN 46550. The calculations performed and checked by Dr. Dennis Edmondson, PhD, PhD, PE, and Dr. Dave Wood, PhD based in AISI and AISC codes.

It was found from testing results that Rstud's geometric shape contributed to its section modulus adding additional rigidity presenting a unique increase in efficiency of a steel stud. In addition, the cold working fabrication present in Rstud design per AISI Cold Working analysis increased the 50ksi yield strength steel material tested to over 60ksi yield strength providing significant strength increase allowing 36ksi working yield strength to be used opposed to 30ksi working yield strength for 50ksi steel.

Dr. Dennis Edmondson, PhD, PhD, PE

